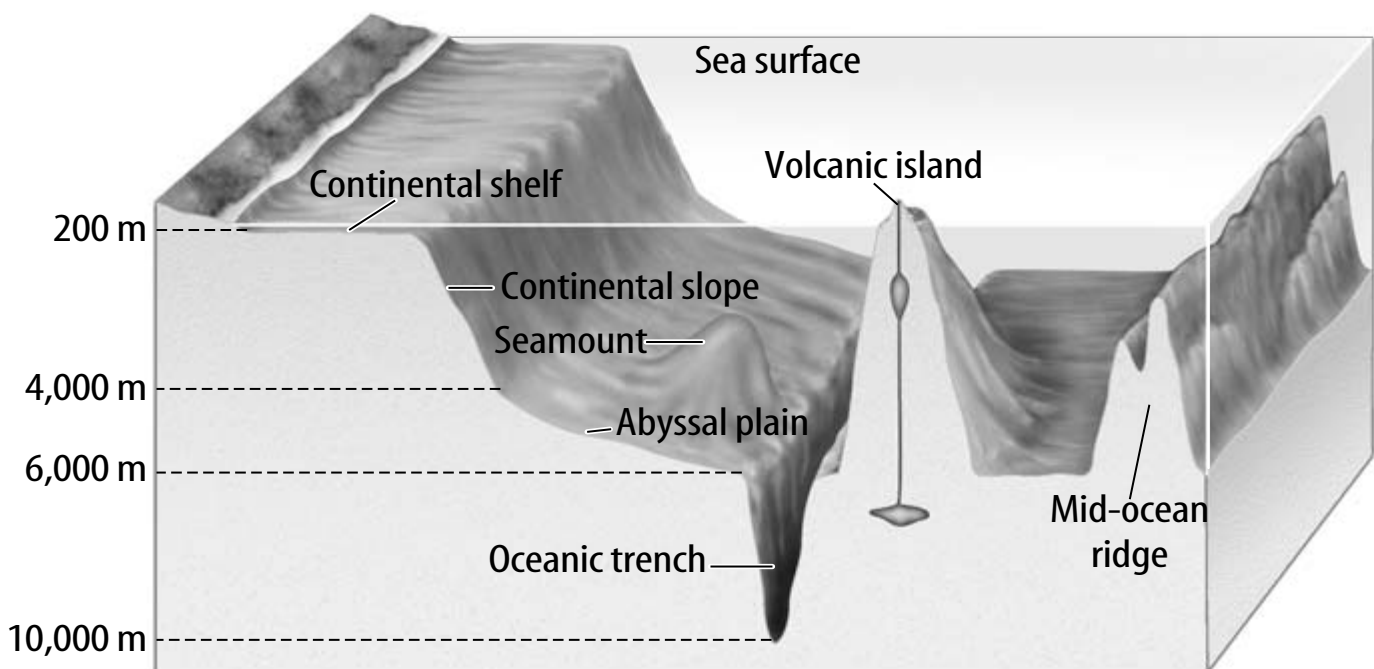


**SECTION**  
**1****Teaching Transparency**  
**Activity****Ocean Basin**

**Teaching Transparency Activity** (continued)

1. On the transparency, which feature is associated with the formation of new ocean floor?

---

2. What is a subduction zone? Which feature is typical of subduction zones?

---

---

---

3. How do abyssal plains form?

---

---

---

4. On the transparency, which feature might contain metals such as gold and titanium in placer deposits?

---

5. Which feature is an inactive volcano peak?

---

6. What part of North America has the narrowest continental shelf?

---

---