

NAME _____

DATE _____

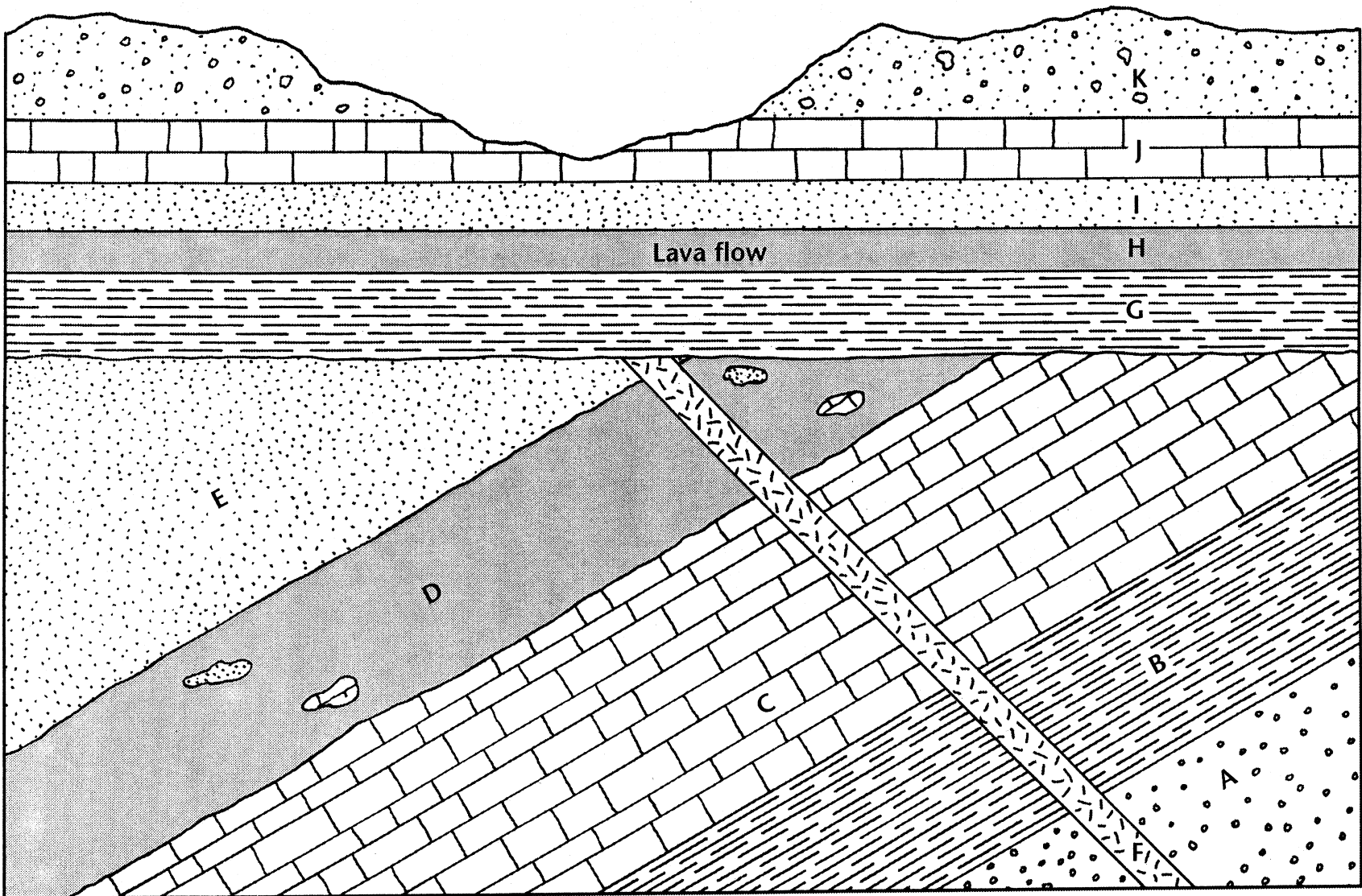
CLASS _____

TRANSPARENCY 24

Clues to Earth's Past

Chapter 12

LAYERS OF ROCK



TRANSPARENCY 24

Clues to Earth's Past

LAYERS OF ROCK

1. Explain how you know that layer F is younger than layer E and older than layer G.

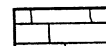
2. Layer D is a sill. What does that tell you about its relative age?

3. Explain how the diagram shows an angular unconformity.

4. Which layers of rock show signs of erosion? What might have caused this erosion?

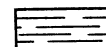
5. Draw a rock relationship using the following clues and key. Label the layers.

A The ocean covers the area; corals thrive and limestone deposits are formed.



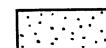
Limestone

B Mud washes in and is later pressed into layers, forming shale.



Shale

C Coral deposits occur again. Limestone forms.



Sandstone

D Sand is deposited and later cemented.

E Coral deposits occur, forming limestone.

F The entire area is uplifted above the ocean, and a disconformity occurs in the top layer of limestone.

G The area is again covered by the ocean, and mud washes in, forming shale.